

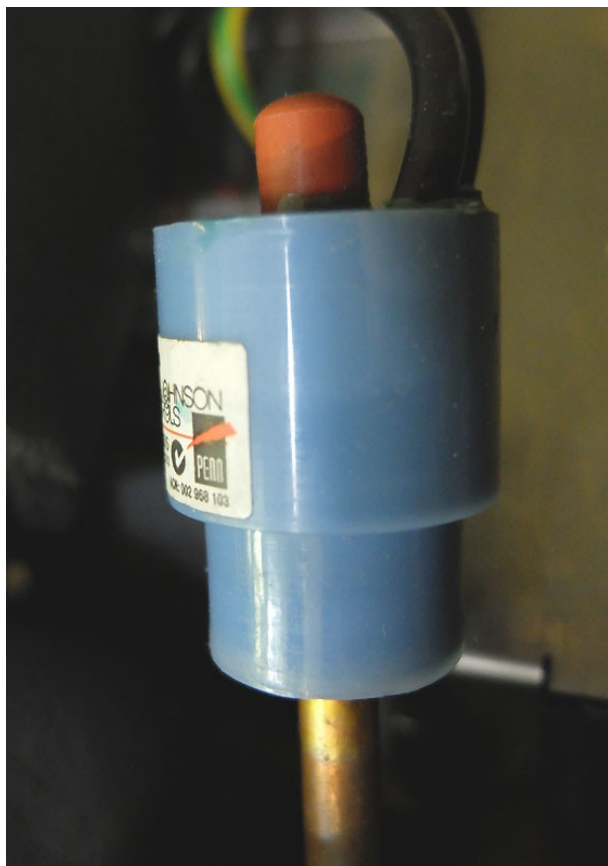
Title:	No Cooling - Over-Temperature Switch			ID:
				0385
Date in:	Response:	Model:	Author:	
2018-01-21	2018-01-21		CMA	

Q:

The climate control doesn't seem to kick in. The target temperature is set to 4C but the door is really hot and the inside is at 32C. I can only see one power connector. RD 515 returns 1.

A:

Could it be that the water cooling was shut off? In this case the over-temperature switch located near the compressor must be reset. Make sure that there will be sufficient water flow. Never press knob while unit is powered.



TURN POWER OFF PRIOR PRESSING RED KNOB!