

Title: Shovel Speed Pot V2.x		ID:	
		119	
21.11.11	Response:	Model:	Author:
		-	CMa

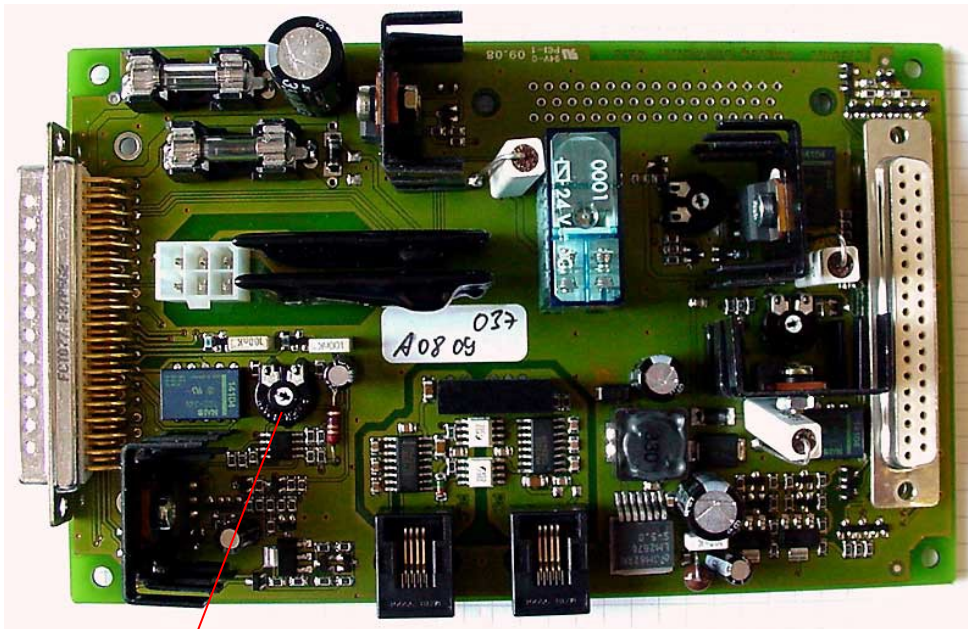
Shovel Speed Potentiometer Controller Card V2.x

Version V2.c Controller cards use IxR compensation circuit on the shovel motor. The circuit automatically adjusts the motor current for maximum torque.

There are three speeds implemented

- Max Speed
- Slow Speed
- Sleep Speed

The slow speed is adjusted by a potentiometer. Max. Speed is controlled by timer T48



Shovel Speed