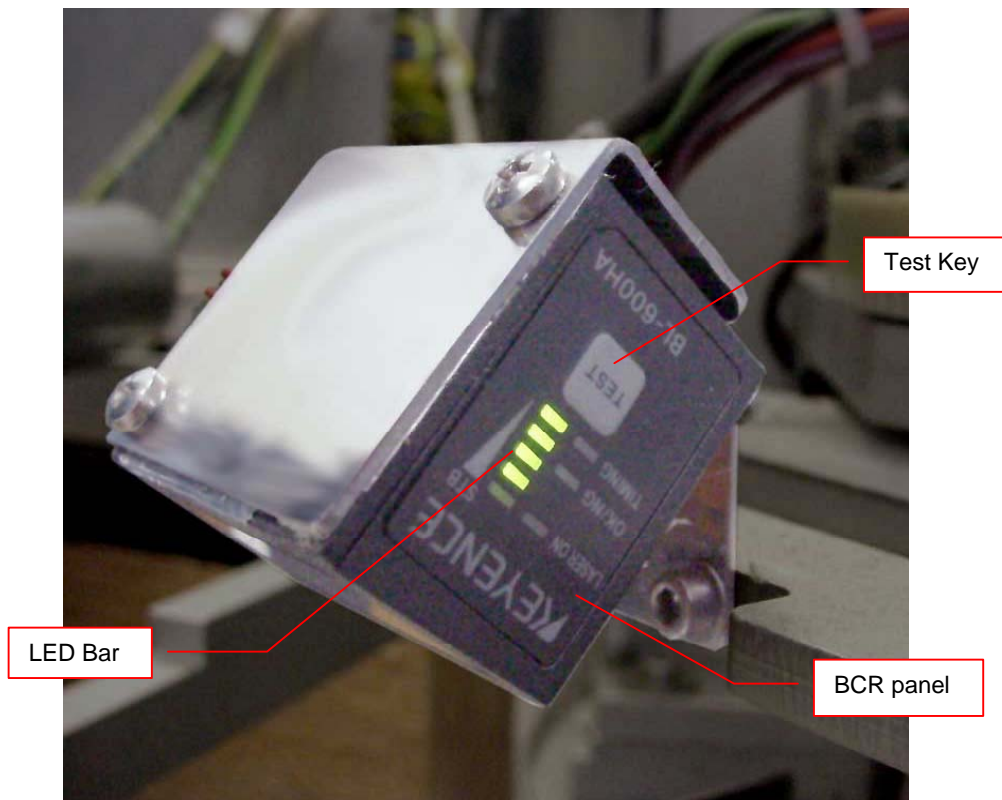


Title:	STX BarCode Reader BCR Diagnosis	ID:	
		0061	
Date in:	Response:	Model:	Author:
2008-03-26	2008-03-26	-	CMa

STX BCR Diagnosis

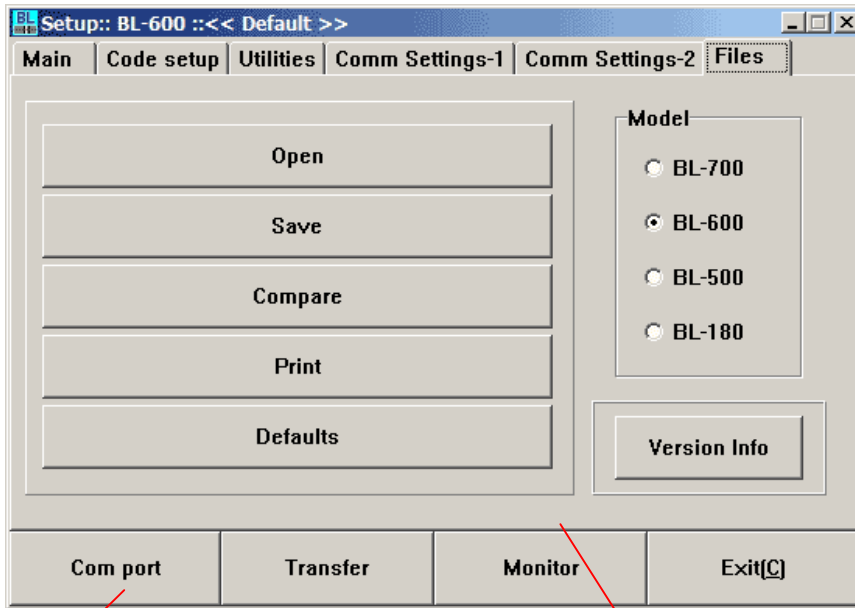
Power instrument off. Remove stackers to have visual access to the BCR located on the lift wagon. The BCR panel is located on the side of the Barcode Reader. After powering the instrument an increasing number of LED's on the LED bar should turn on.



After all LED's of the LED bar are turned on all LED's will turn off.

The laser beam may be activated by shortly pressing the Test Key also located on the BCR panel.

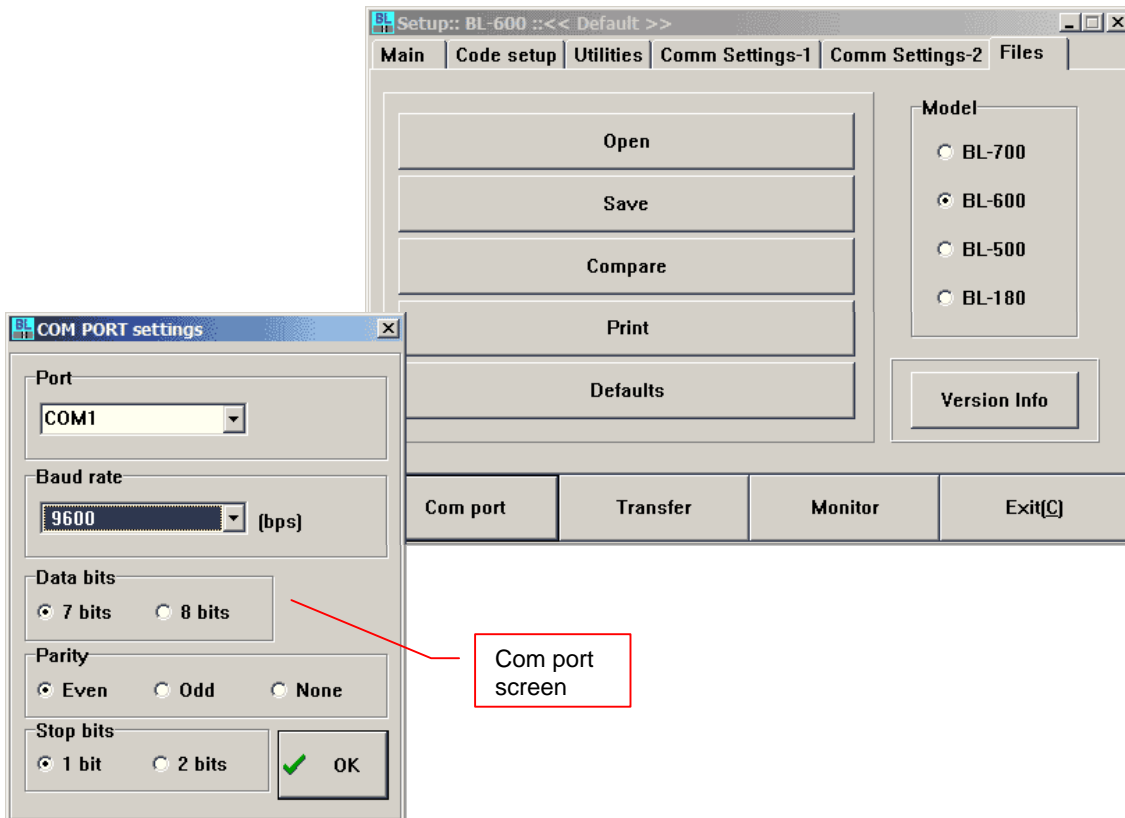
Check a communication cable which connect BCR to PC. If is it connected properly establish communication to the BCR using the BL-Setup program. Check the BCR with "BLSetup" program.



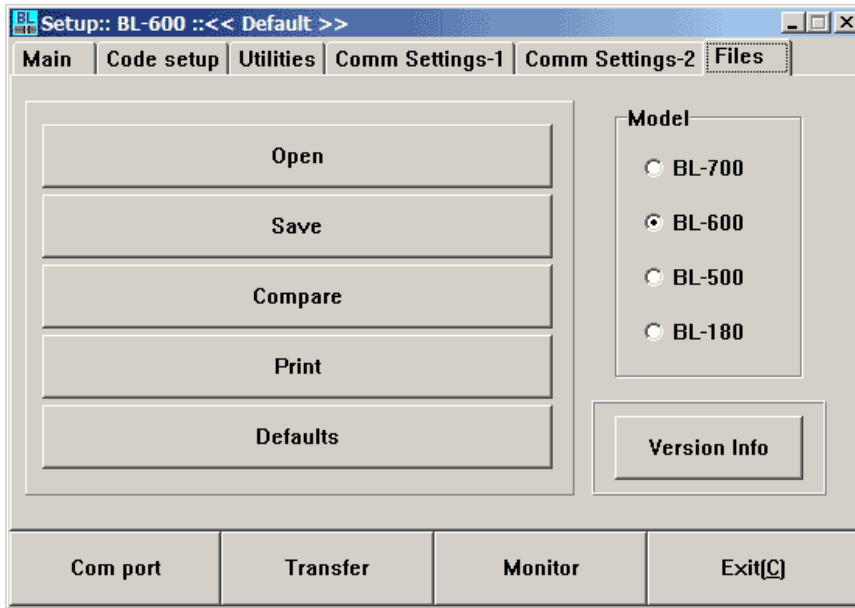
Com port
screen selection

BL-Setup
Main screen

Start the program and select BCR comports (button "Com port").

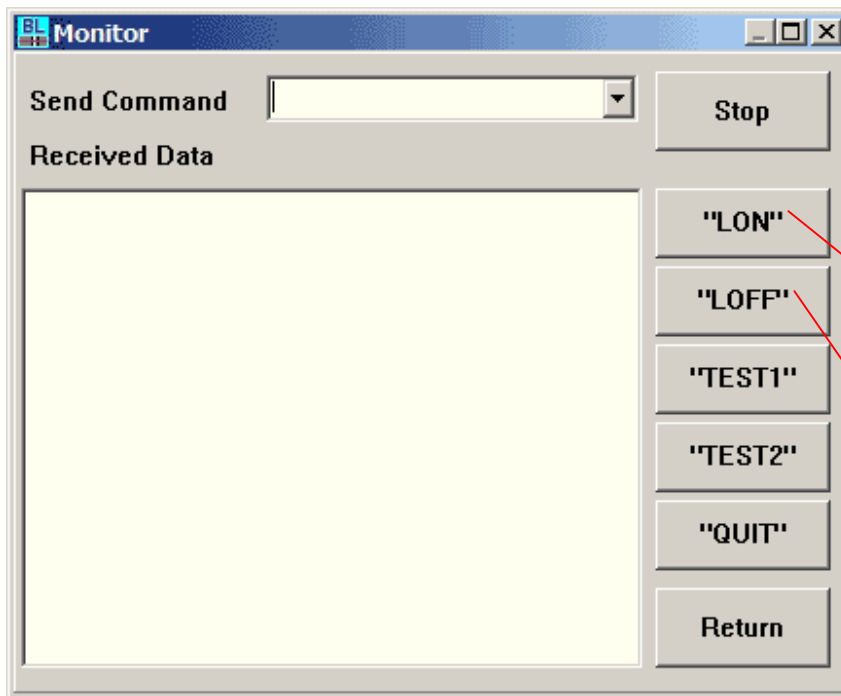


Com port
screen



Monitor screen selection

Switch on a monitor mode (button "Monitor").



BCR activation key

BCR de-activation key

Turn a laser beam on with "LON" button. Please check the beam, is it turned on?
Turn a laser beam off with "LOFF" button. Is it "ERROR" string on "Received Data"?
Place the StoreX handler facing a plate with barcode and press "LON" button. If barcode was read, you can see it on "Received Data" screen.