

Title:	STX Steam Generator Option	ID:	
		0067	
Date in:	Response:	Model:	Author:
2008-07-10	2008-07-10	STX	CMa

STX Steam Generator Option

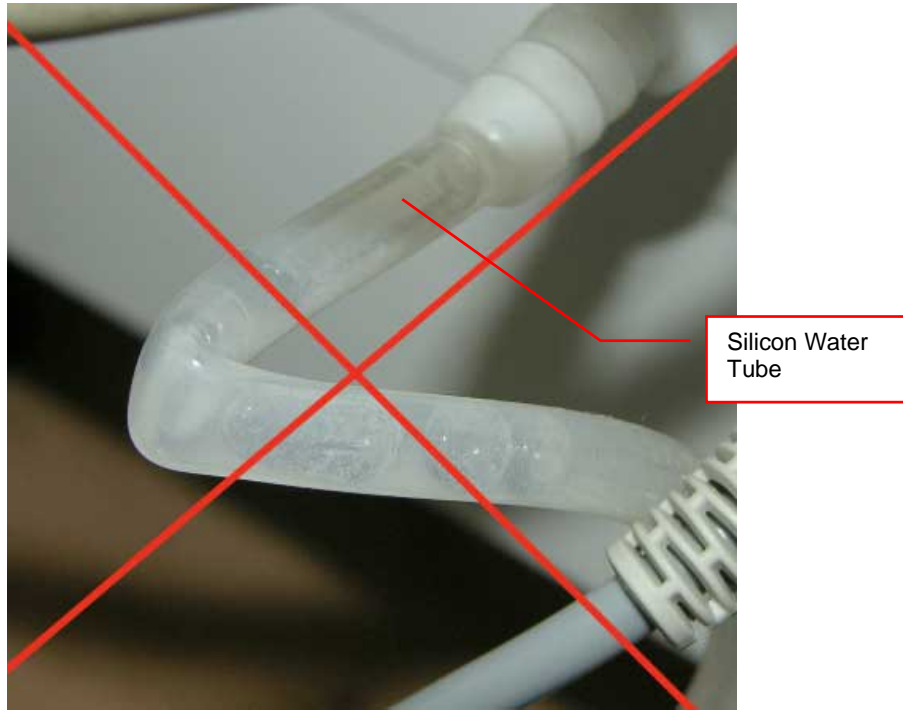
Locate connectors for Steam Generator on back-plane of STX



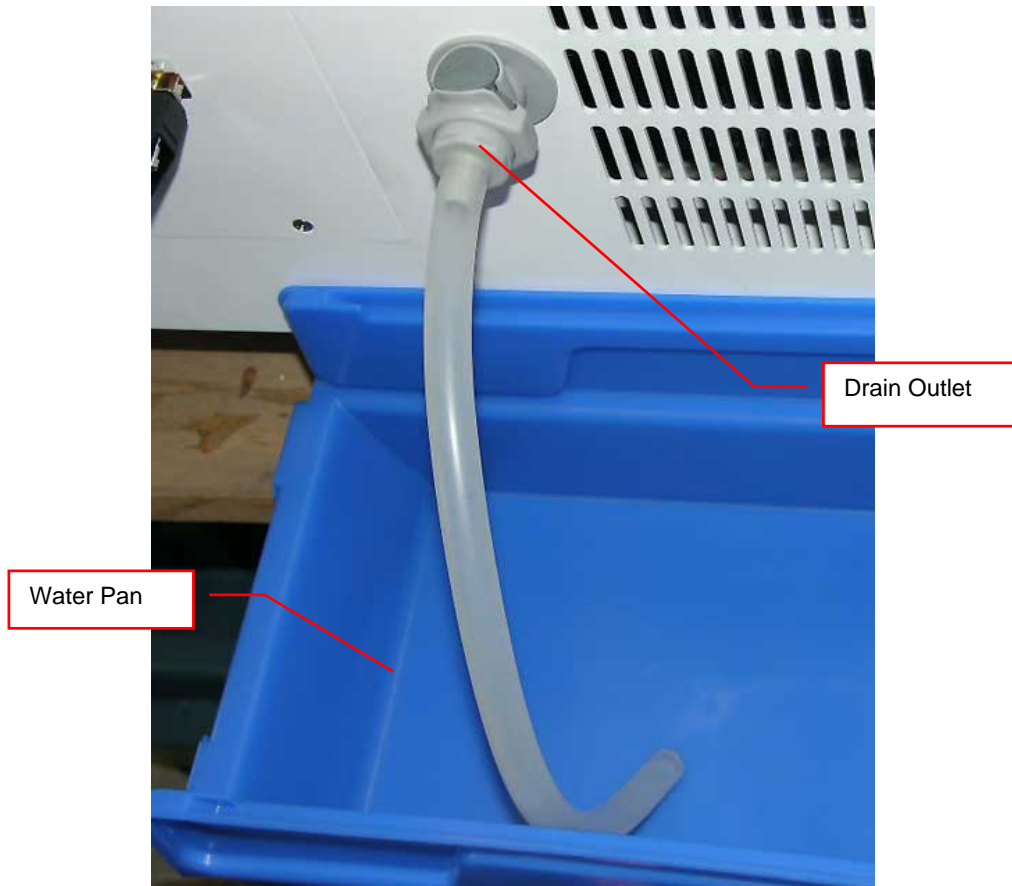
Connect water fitting and water level sensor



Make sure that silicon tube is straight and has no kinks



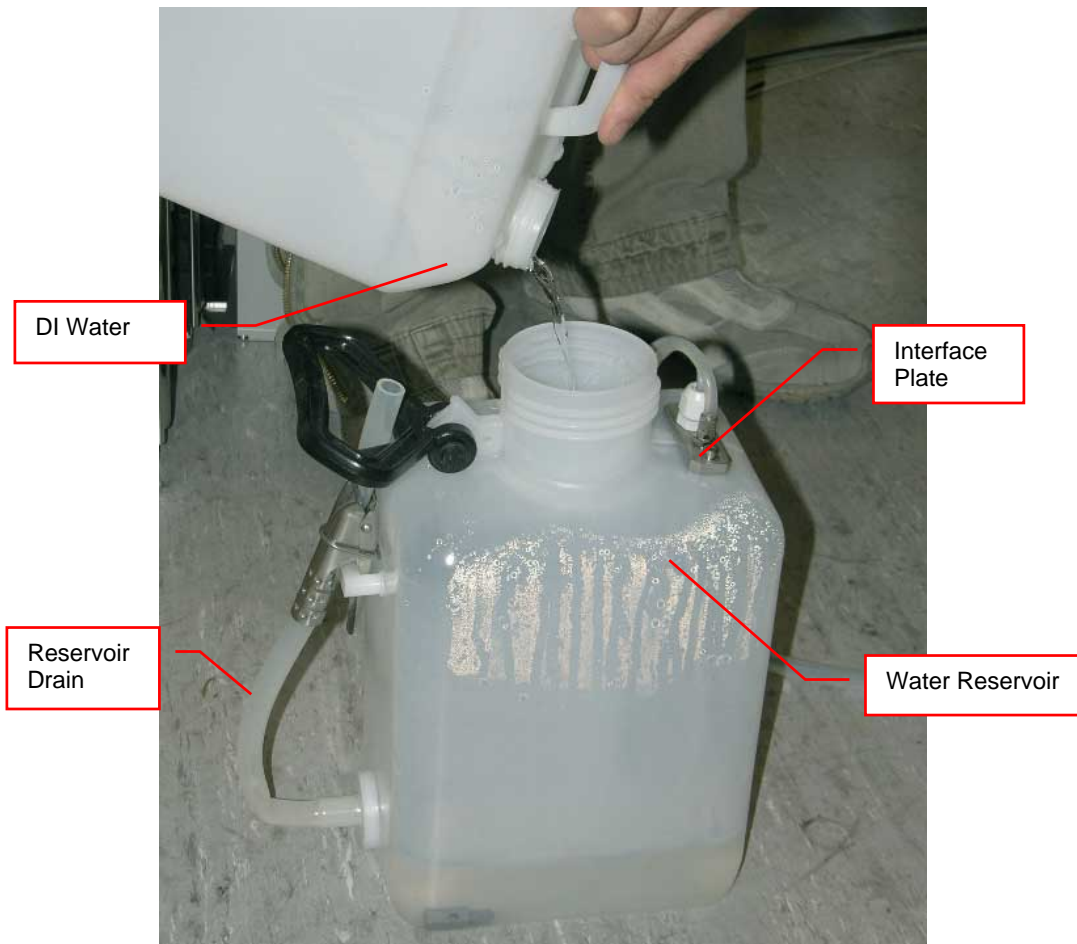
Place water pan for surplus water under drain hose



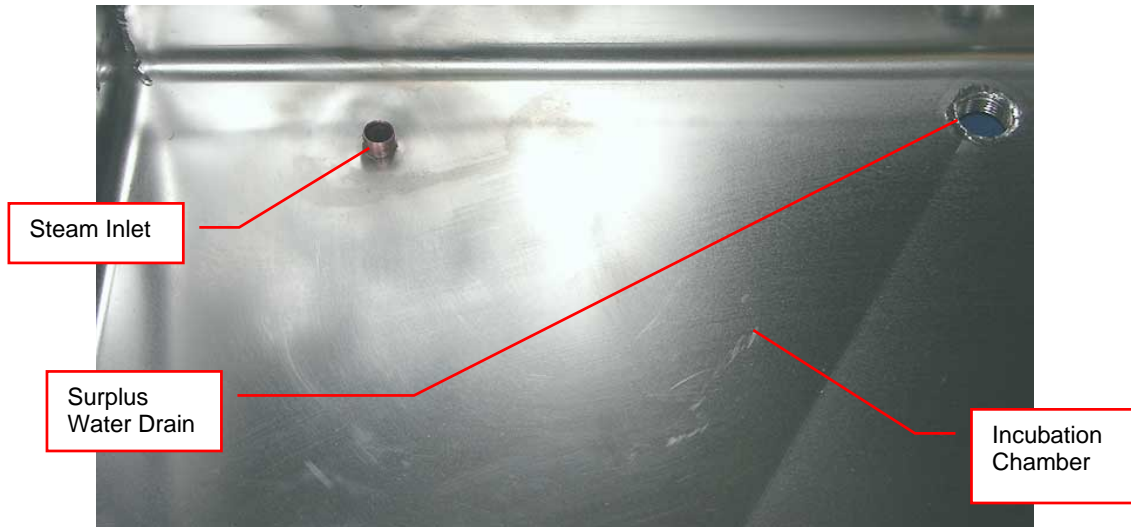
DI-water of <1uS quality is recommended



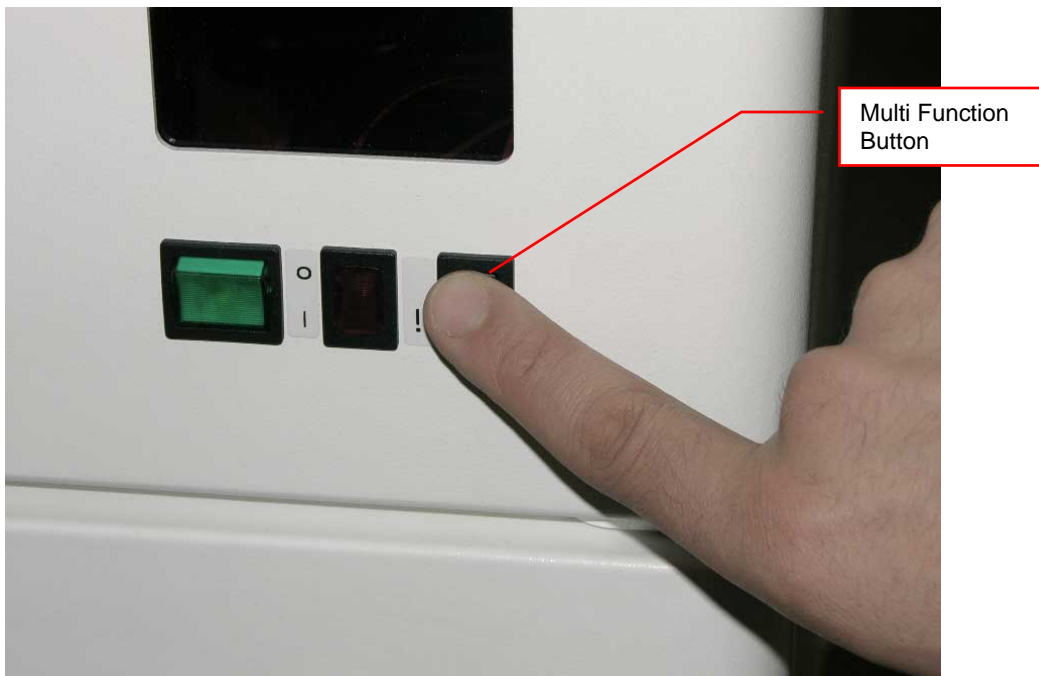
Fill DI-water into water reservoir. Avoid introduction of germs. The capacity of the standard reservoirs are 5 / 10 liters.



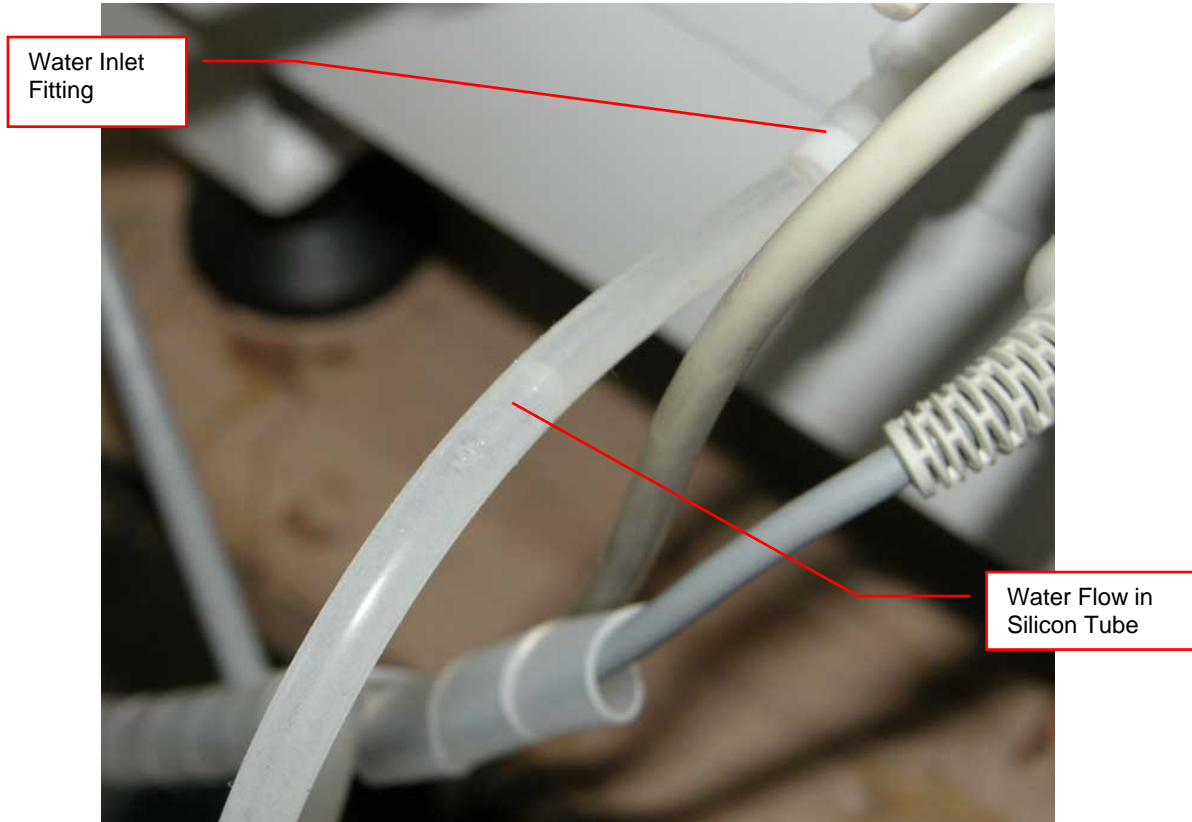
Below picture explains the location of the Steam Inlet and Surplus Water Drain at the bottom of the incubation chamber.



Continuous pressing of Multi Function Button will activate the internal water pump. There is a initial delay of ~20s before the pump starts.



Water flow may be monitored at the silicon water tube form the water reservoir to the water inlet fitting. Keep Multi Function Button pressed until water reaches the Water Inlet Fitting



Allow the system to fill the internal tubes to the Steam Generator. This may take several minutes.

